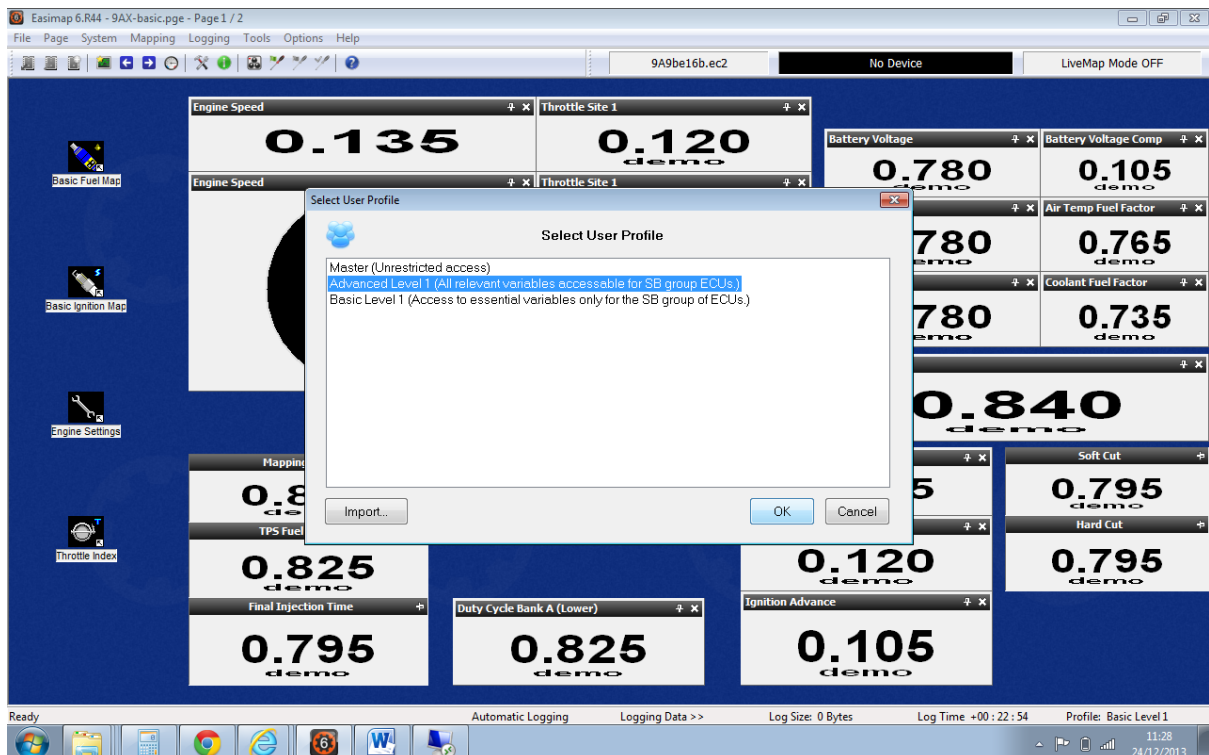


January 2014

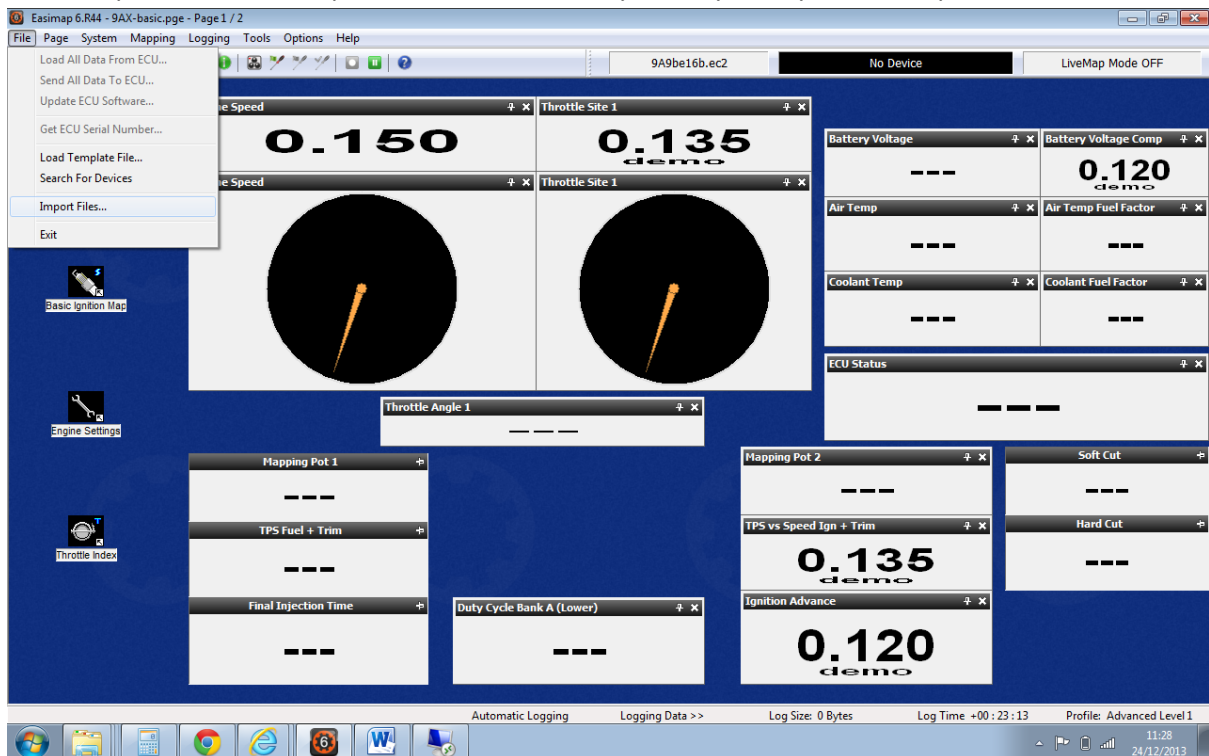
## MBE ECU Software updates

You must be using Easimap 6 R44 or later. Please always ensure you have the current Easimap 6 version and check our website for regular updates.

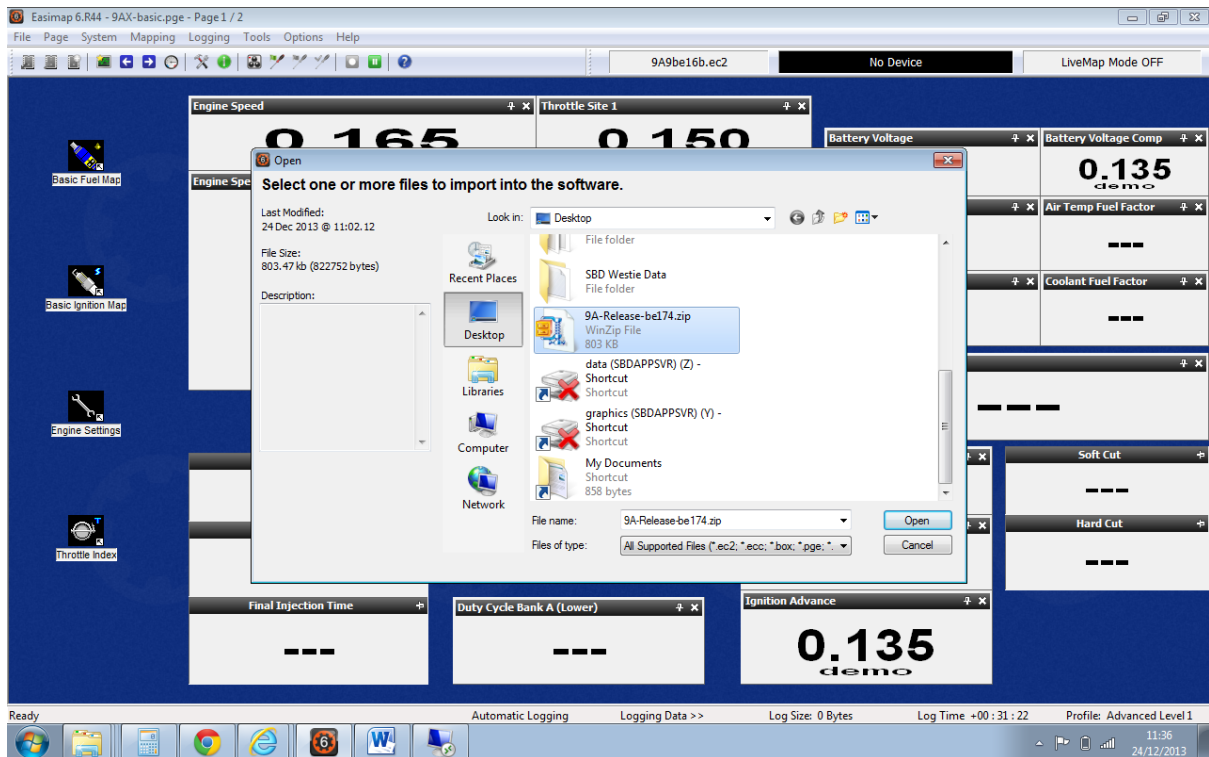
You can access the 'Import File' section from both 'Basic' and 'Advanced level 1'.



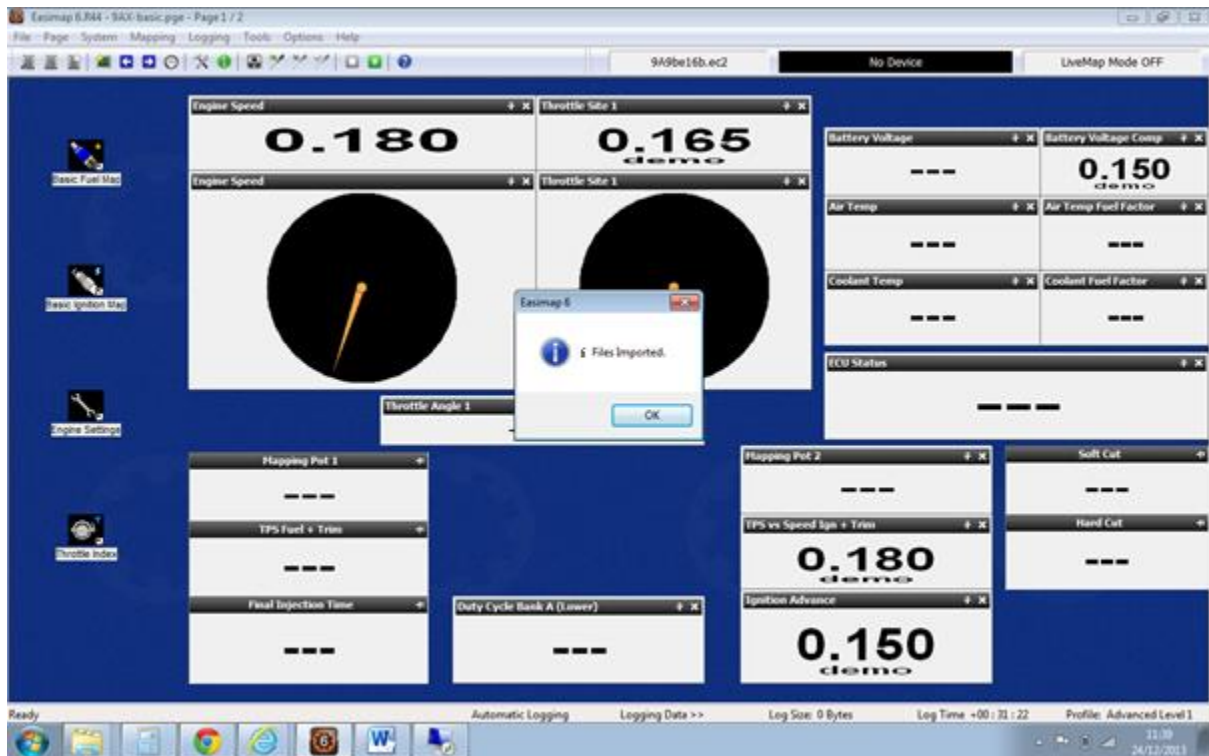
Download the latest Zipped ECU software release from our website to your desktop. Then select 'File', 'Import Files', Easimap 6 will the automatically direct you to your desktop.



Then Select the 9A-Release you have downloaded (for example 9A-Release-be174.zip)

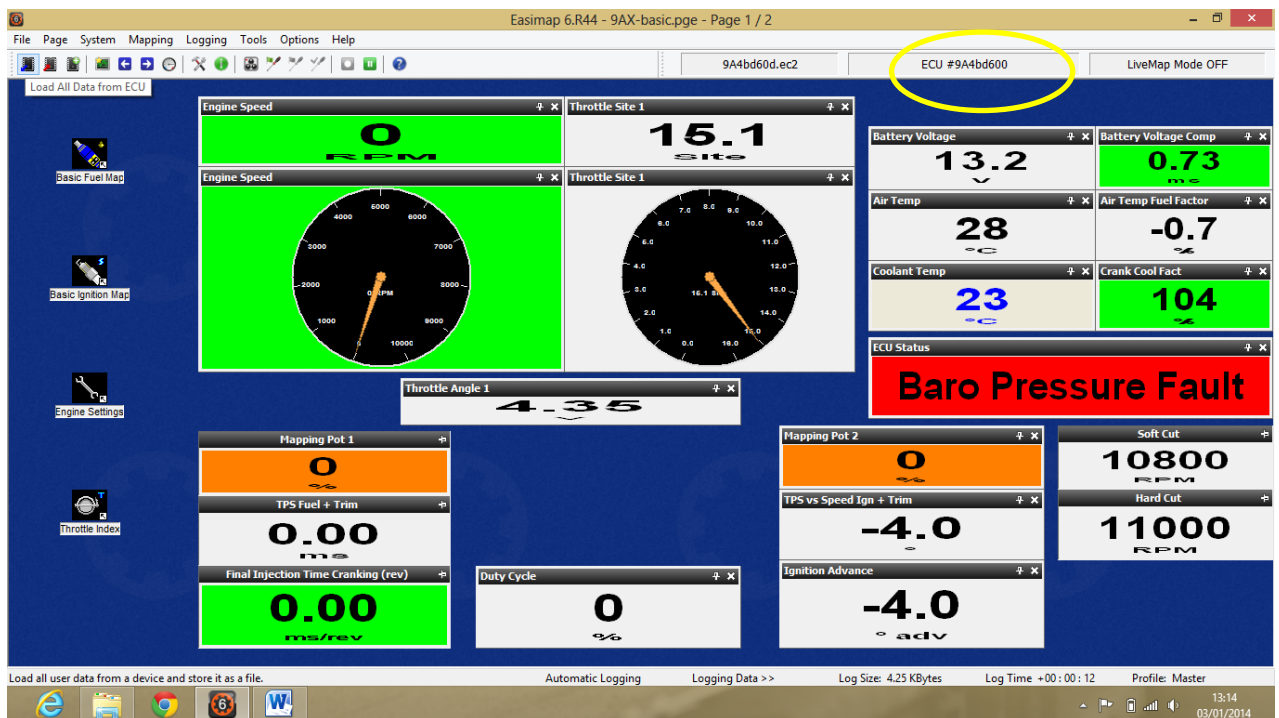


Easimap 6 will then import the files from the Zipped file.

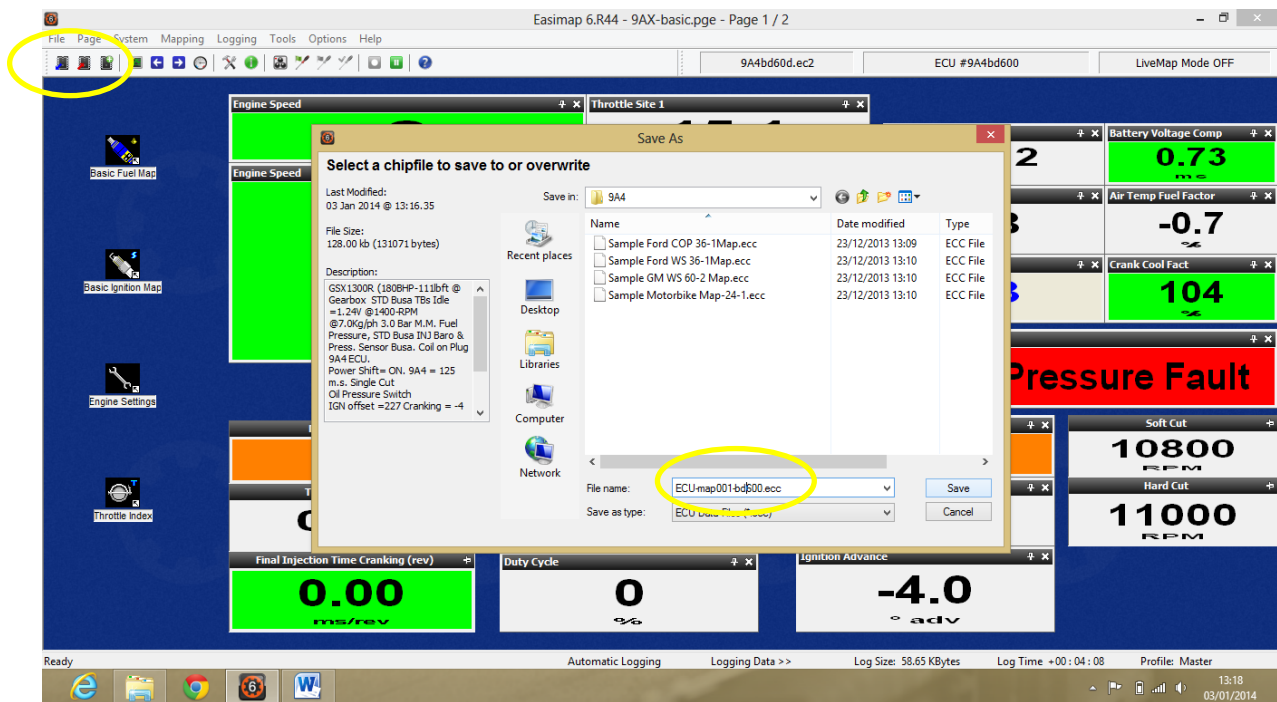


Now connect your ECU and power it up.

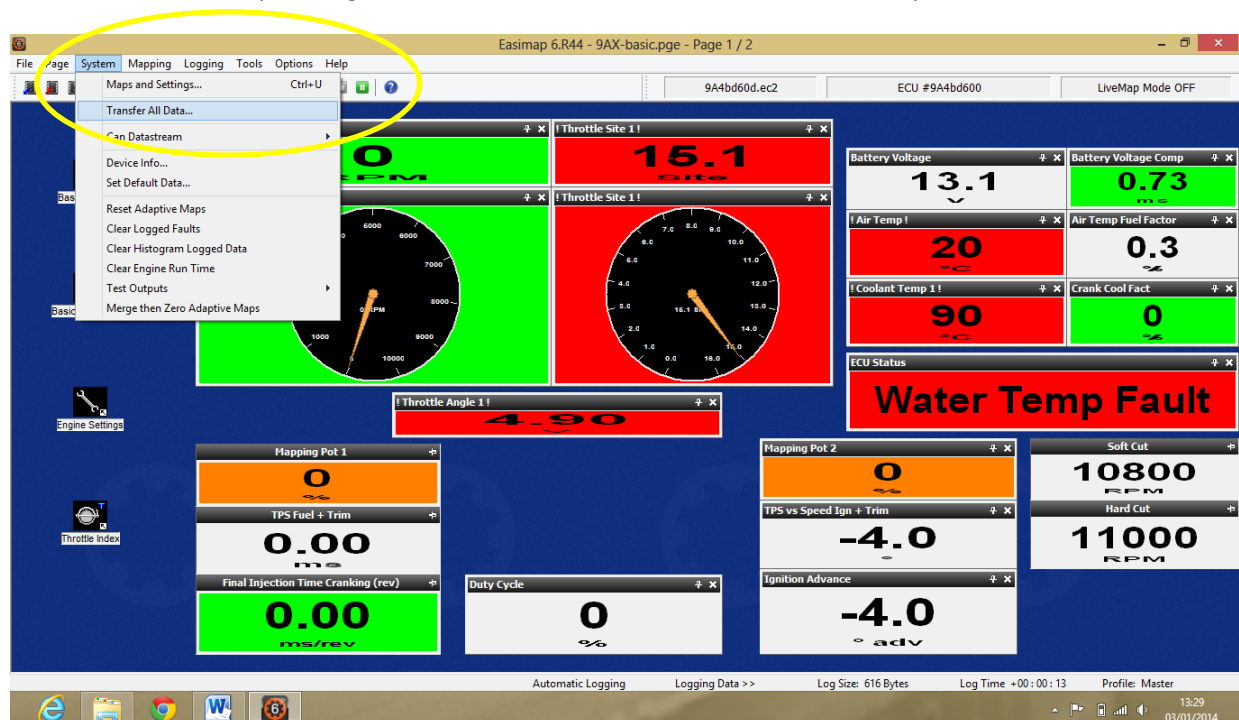
The current ECU software will appear in the panel mark **No Device**, before updating your ECU it is recommended that you make a copy of the current map for safety and make a note of the current software version.



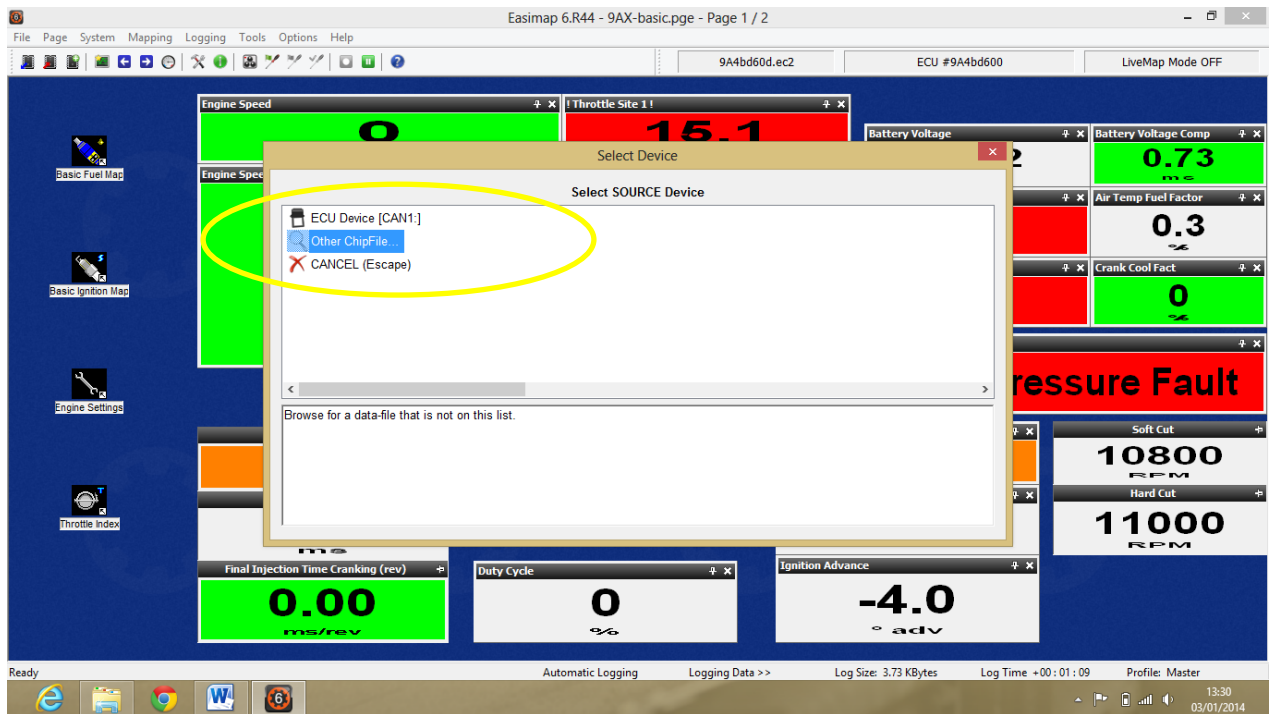
Click on the 1<sup>st</sup> chip Icon on left (Load All Data from ECU)



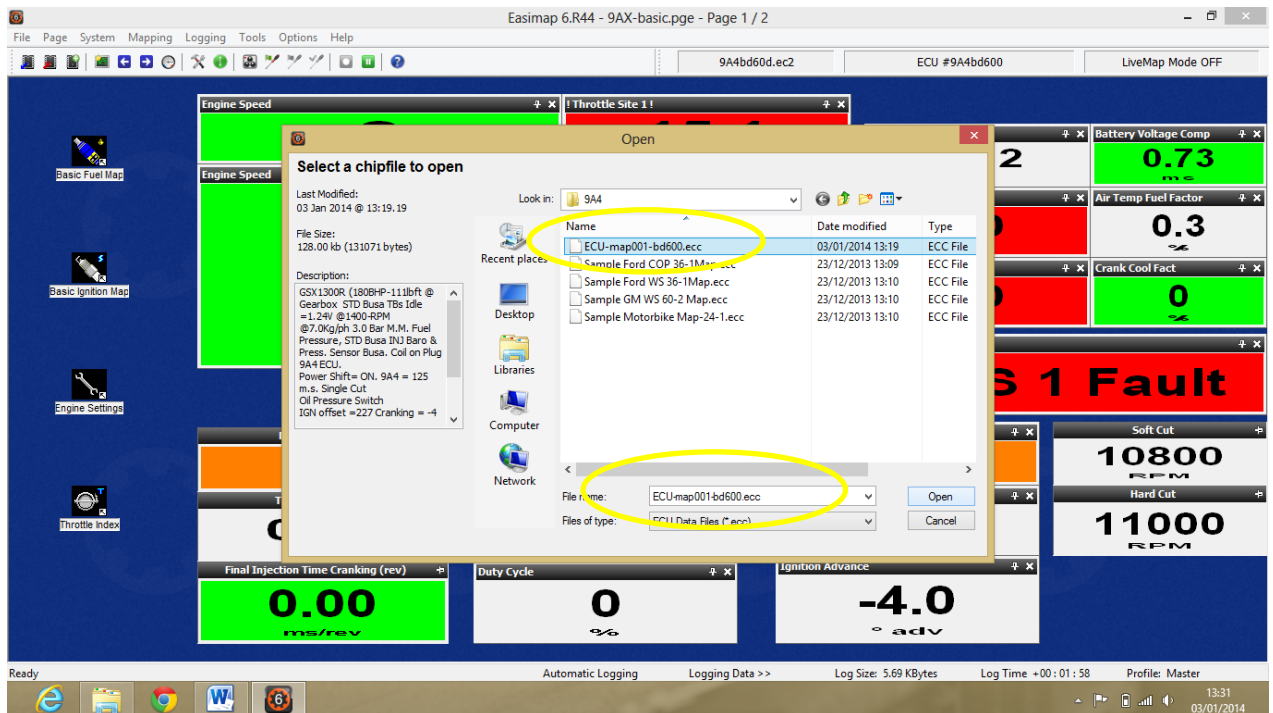
Give the copy of the map you are saving in the ECU a memorable name. The example ringed in yellow, gives lots of information. First of all it says it has come from the ECU, secondly it is a 1<sup>st</sup> copy hence 001 and finally I put the software version, so I know which software version the ECU arrived with. You could always change the name to the customer's name, for example, Matt-001bd600.



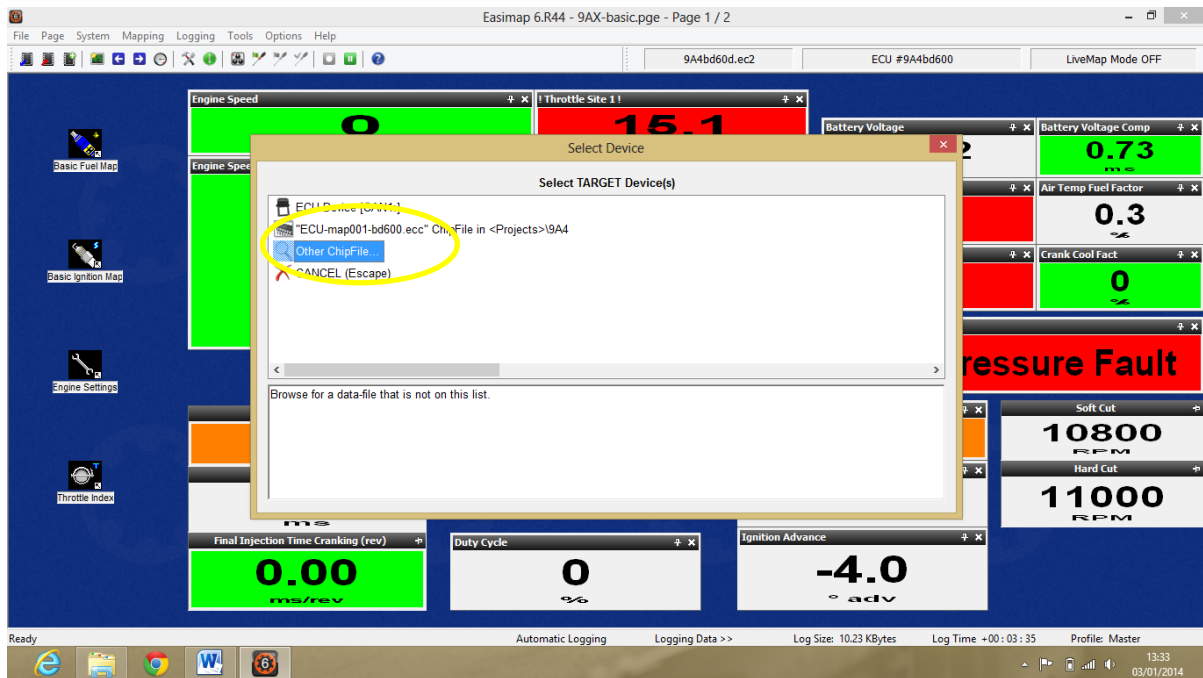
I now suggest you make a copy of the copy you have taken from the ECU. This way you are keeping your original copy safe. I normally name the new software version you intend on using if it is being changed. Again the same rules apply, make the name that you create something that is memorable and when you come back to it, maybe months or years later, it will still make sense to you.



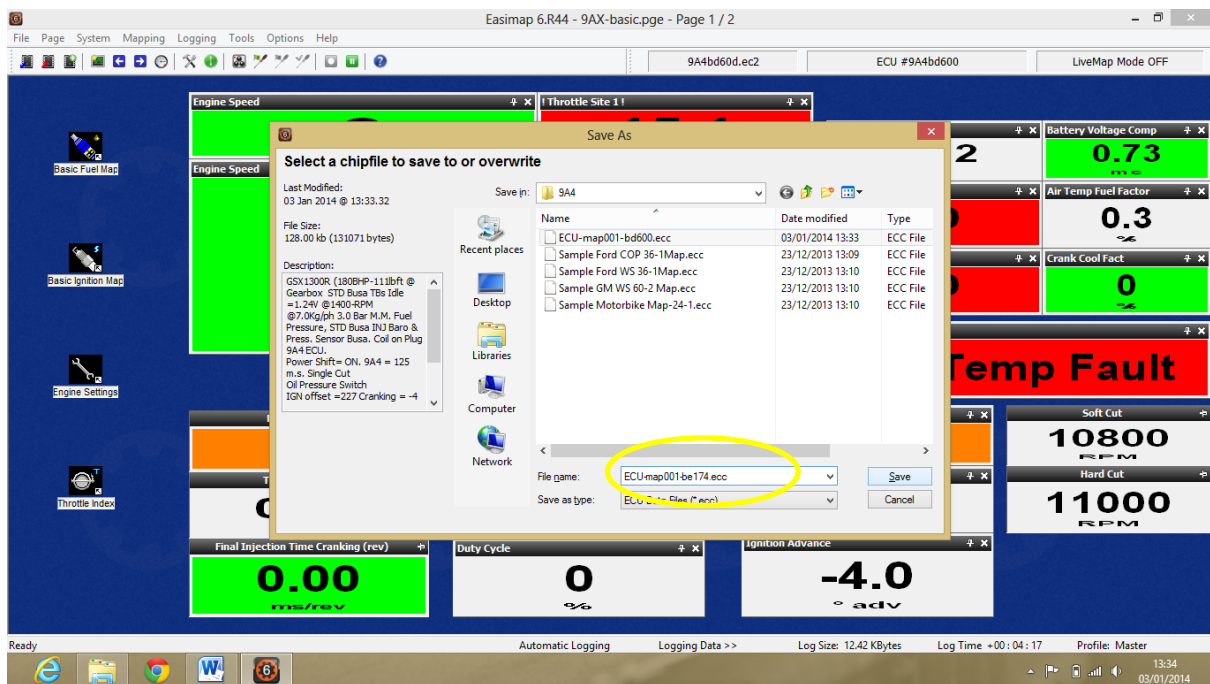
Select 'Other Chipfile'



Now select the copy you made & Open

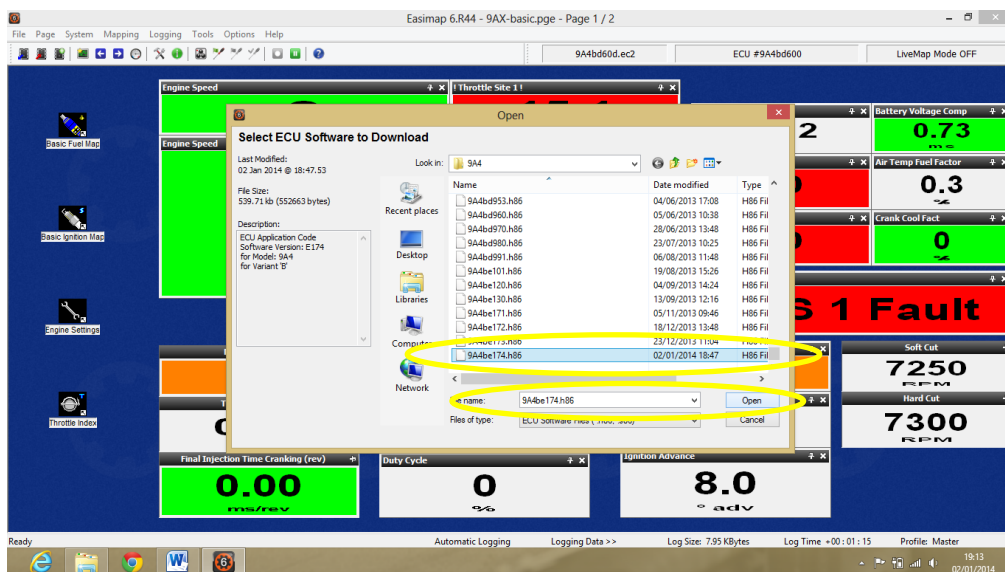
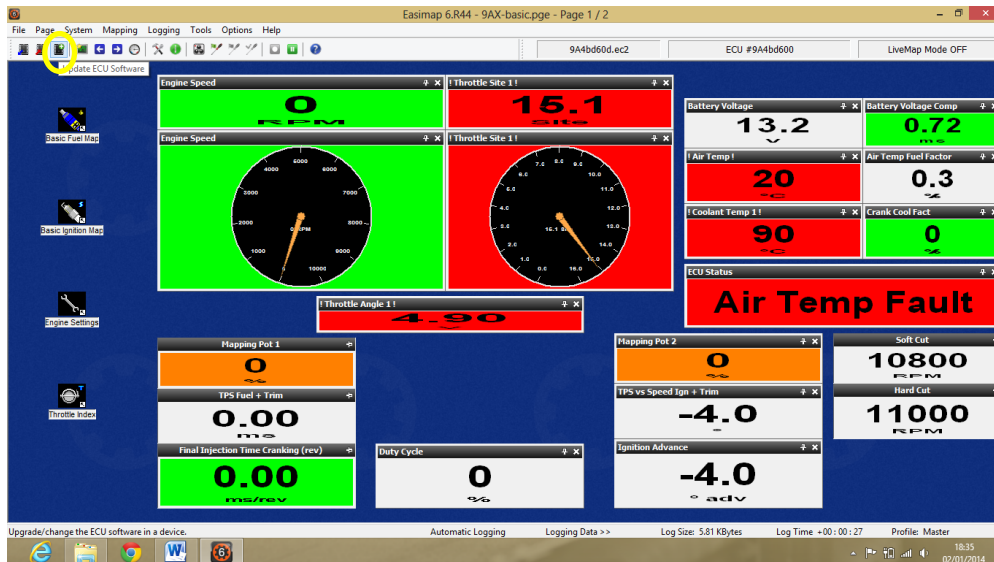


Select TARGET Device and click 'Other Chipfile'

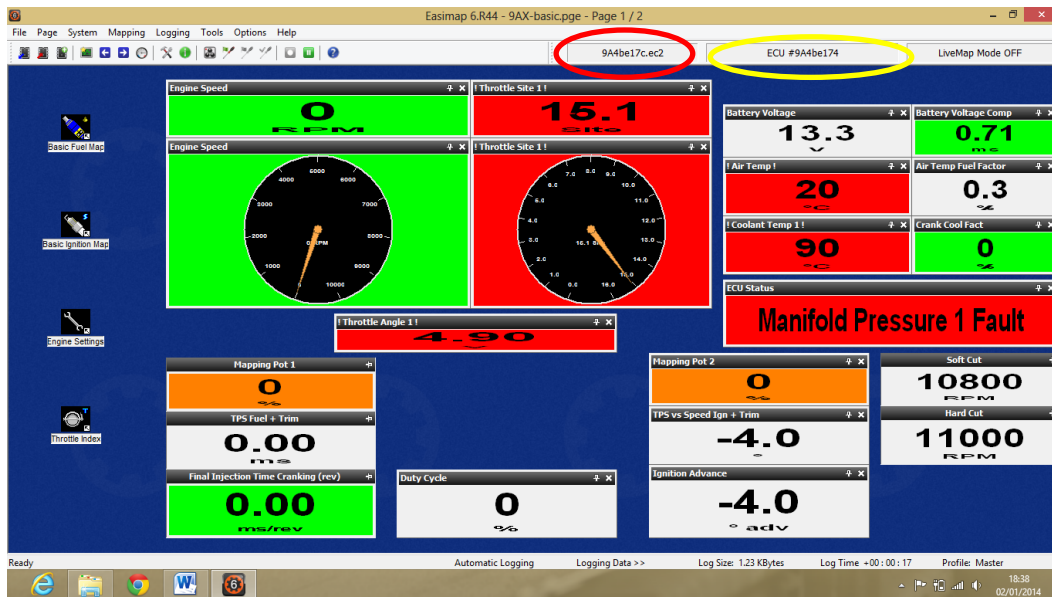


As you can see from the name ringed in yellow, the name has been changed only to show the new software version, which you are going to load into the ECU. It is suggested that you make a copy every time you make significant changes to the map in the ECU, this way you can go backwards if you prefer some of the earlier work you have done. We always save information to the ECU and to the current copy stored on the lap top, to ensure they are both in harmony. This should be done every time a change is made, this way you are only a few seconds away from recovering data from your lap top if an issue occurs for whatever reason.

Now you are ready to update your ECU software. Pass your mouse over the chip Icons and then click and follow instructions. Click on the 3<sup>rd</sup> from left chip Icon and select the software version that you have download e.g. 9A4be174, follow the Easimap 6 Instructions and ensure the ECU is not disconnected from its power supply during the update.



Select the software version you wish to install it will then appear in the file name box highlighted above. Click open, Easimap 6 will then erase the current software within the ECU and commence downloading the new software, this may take a few minutes.



Once the download is complete, you will be told that Easimap will have to restart and reload appropriate files. Once this has been done, the ECU will then have its new software installed which you can see in the yellow ringed box above and Easimap 6 will select the matching ec2 file which is its template, this is ringed in red, so that all the new parameters that are available in the latest version are accessible.



SBD Motorsport Ltd  
Unit 15, Red Lion Business Park, Red Lion Road, Surbiton, Surrey.  
KT6 7QD  
Tel: 0208 391 0121  
Email: [sbdmotorsport@btconnect.com](mailto:sbdmotorsport@btconnect.com)  
Website: [sbdmotorsport.co.uk](http://sbdmotorsport.co.uk)



SBDMotorsport



sbddevelopments